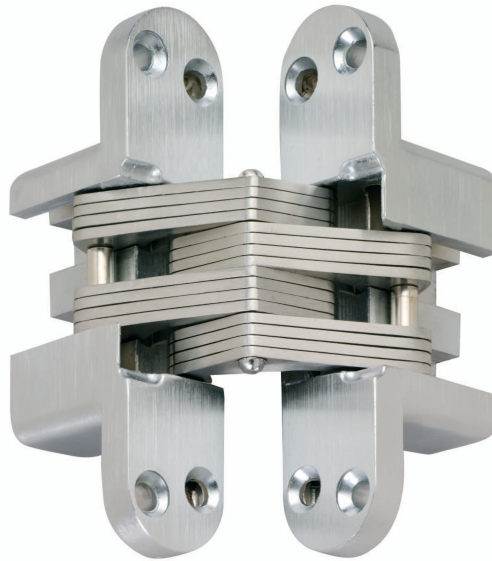


Product Spec Sheet

Name: Fire Rated Concealed Hinge

Code: CH28115



Specification

Usage:

Internal residential and commercial doors
Max weight 55kg

Material:

Zinc diecast

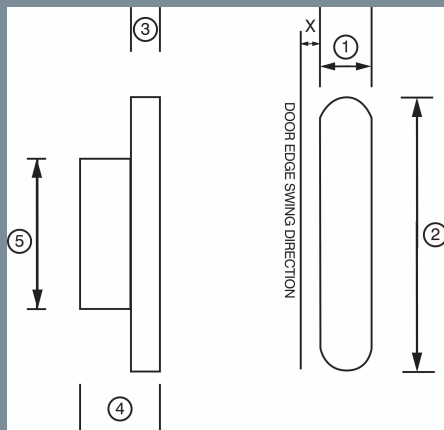
Finishes:

SCP

Fixings:

Wood screws

Dimensional Drawing:



- 1 Hinge Width
- 2 Hinge Length
- 3 Plate Depth
- 4 Mortice Depth
- 5 Mortice Length
- X Dimension from Door Edge (mm)

X	1	2	3	4	5
6.40	27.80	118	9.00	41.00	60.40

Note:

BS EN 1634-1:2000 30 mins
BS EN 1634-1:2014 60 mins
BS EN 1363-1:2012
Min door thickness 41mm

Declaration of Performance:

045CPR2013-07-02